

BW11 Inbound Aerosol Mod Project

Maggie Robertson – Area Manager Intern

Problem Statement

1. The *vertical bins* in the aerosol mod pose as a safety hazard as well as not maximizing the possible space within the mod.
2. Reorganizing *aisle 310 bins* within the aero mod so that they're in correct order and in the *pick path*.

Overview

1. *Vertical Bins* – The vertical bins project began on June 11, 2021. The vertical bins were in use for two and a half years and are being replaced by endcaps and shelving. On June 11, 2021, all of the vertical bins had to be locked in preparation for endcaps and shelving to arrive. On July 2, 2021, the endcaps and shelving were ordered:

- 27 endcaps – 84Hx18D48W – 6 levels
- 7 racks – 96Hx24Dx48W – 9 levels
- 1 short endcap – 84Hx9Dx48W – 6 levels

The endcaps and shelving are expected to arrive on August 30, 2021. On July 21, 2021, all of the vertical bins were disposed of.

2. *Aisle 310 Bins and Pick Path* – The aisle 310 bins project began on July 1, 2021.

The bins within aisle 310 were locked for 9 months. The bins had to be rearranged physically and virtually to be in the correct order. During this project, 11 bays were unlocked, two bays had already existed virtually, one bay was deleted, and one bay was retrofitted. The labels for the bins were already there and some new ones had to be printed within BW11. The pick path was unlocked for aisle 310 as it was already in place. Bays within aisle 310 had to be deleted to then be recreated. This project reached completion on July 9, 2021.

Metrics

1. The order consisted of 35 shelving units to replace the vertical bins. There is an estimated increase of 1,284 cubic feet of space by replacing the vertical bins with shelving.
2. While there was no physical capacity increase as all the physical capacity had already existed, there was a virtual capacity increase. Two virtual bays were deleted causing a virtual capacity increase.

Cost

1. The cost of one endcap unit is \$356.39 with a total cost of \$9,622.53 for the 27 units.
2. There were no financial costs of reorganizing aisle 310 bins:

- 8 hours of work from the data analyst, 5 hours of work from the PA and problem solver, and 4 hours of work from associate physically rearranging bin labels

Results

1. The expected results are a safer aerosol mod, maximizing all of the possible space, and better rates for the pickers and stowers.
2. More items are now able to be stowed within the aerosol mod, the pick path is now unlocked, and virtual and physical bays now match.

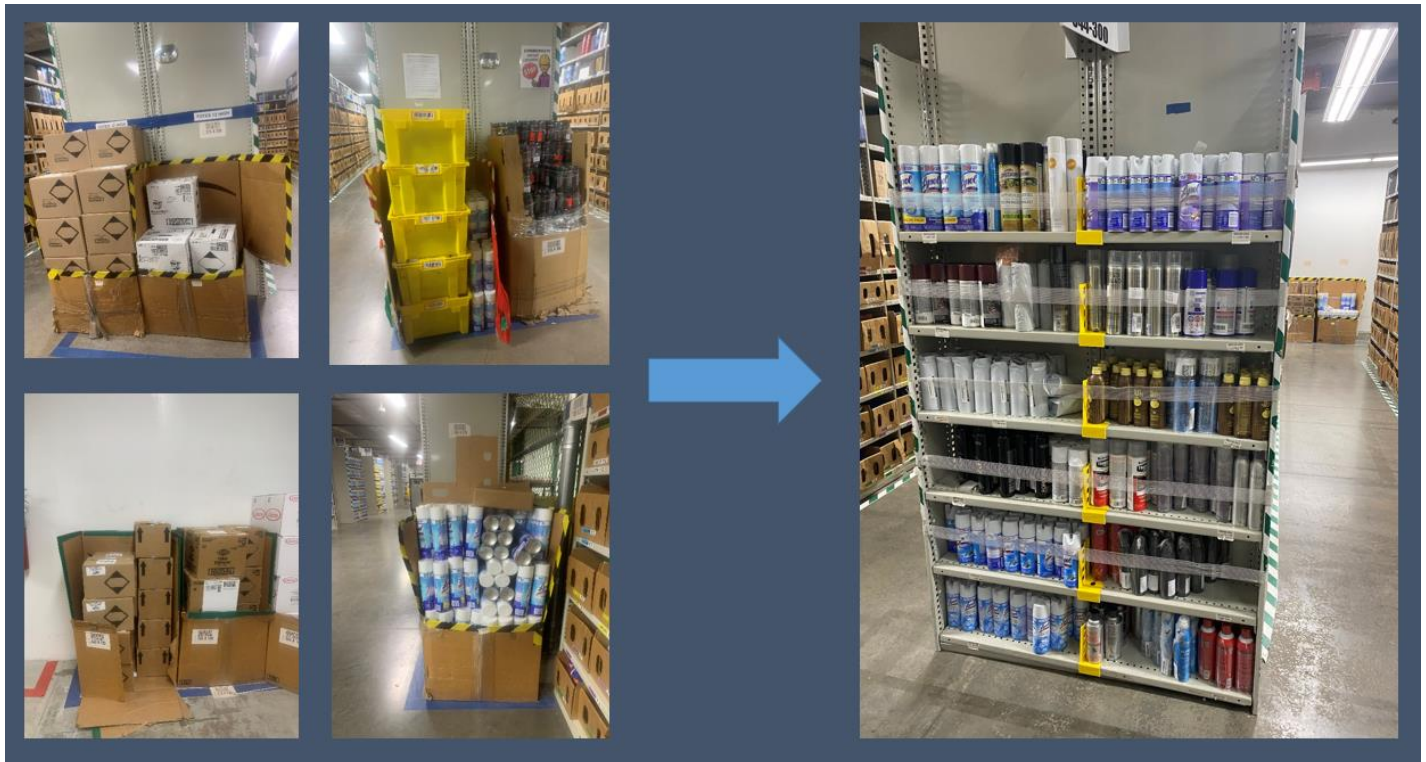
Next steps

1. Install the shelving upon arrival and monitor RME progress and gather feedback from pickers and stowers.
2. There are no further steps to report.

Appendix

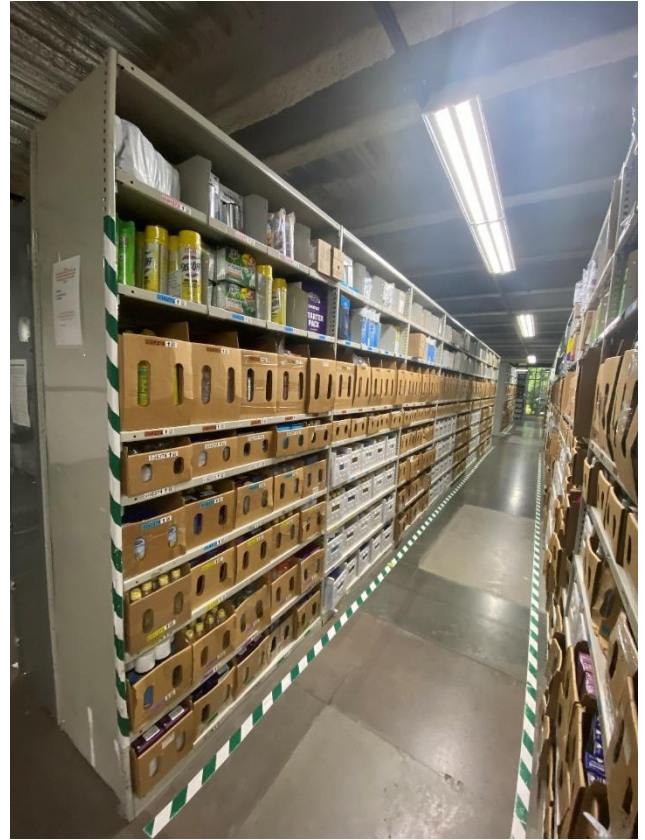
Appendix I.

Before and expected after in the aerosol mod:



Appendix II.

Aisle 310:



Appendix III.

Pick map:

